



## E-MAG Router Screen Installation Instructions

### *Purpose:*

This kit is used to add a screen to the E-Mag Faceplate Router (6904-702). This will prevent screws from falling into the router motor vent holes.

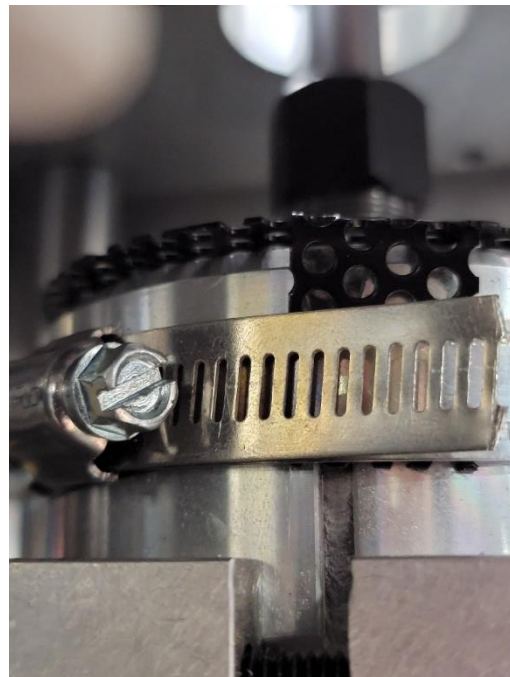
**Before carrying out any maintenance work, be sure that the main power supply has been disconnected and that there are no live circuits in the machine main panel.**

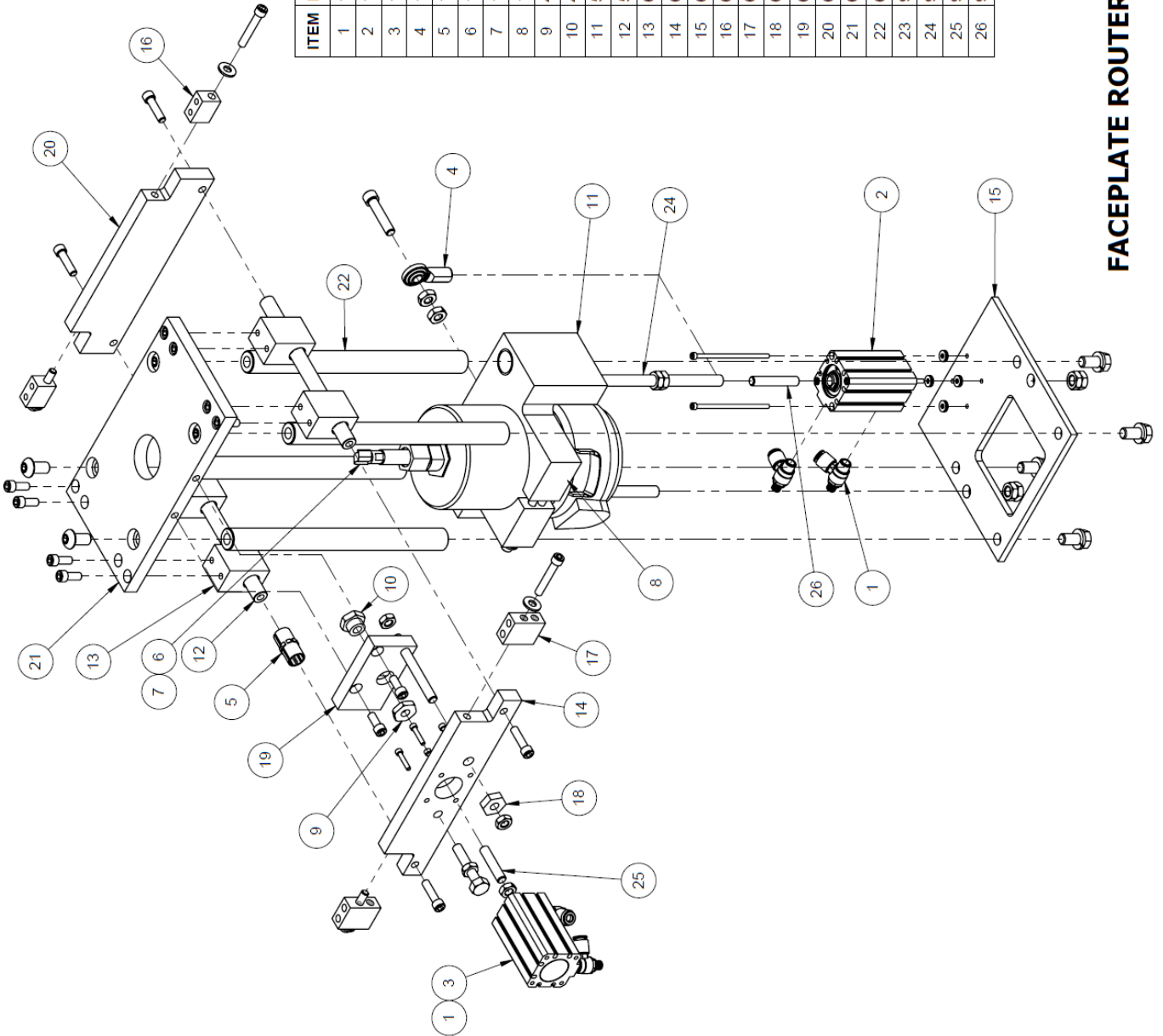
### *Contents of 26-6913-00 Kit:*

- 1x 13-1927 Hose Clamp
- 1x 6905-083 Router Screen
- 1x 17-647 Installation Instructions

### *Tools Required:*

- Collet wrenches
- 3/16" Allen wrench
- Flat head Screwdriver





ITEM	PART NUMBER	DESCRIPTION	QTY.
1	10-562	SMC Flow Control, 1/4T x 1/8P	4
2	10-1217	SMC NCD08BZ106-150-M9NLS Cyl.	1
3	10-1408	SMV NCO8A106-200	1
4	12-082	5/16-24 Rod End	1
5	12-844	IGUS JUI-01-08 Bearing	4
6	13-567	Router Bit	1
7	13-735	Shank $\varnothing 1/2$ X 2-3/8"	1
8	15-174	Dewalt DW 616 Router Motor	1
9	4616-005	Aligning Insert Nut	1
10	4616-006	Aligning Insert	1
11	5034-007	FPR Clamp	1
12	5051-005	Vertical Slide Rod	2
13	6904-001	Bearing Block	4
14	6904-003	FPR Mount	1
15	6904-008	FPR End Plate	1
16	6904-015	Pivot Mount	2
17	6904-016	Pivot Clamp	2
18	6904-033	Stop Disk	1
19	6904-045	Y-Axis Drive Plate	1
20	6904-050	FPR Mount	1
21	6904-051	FPR Top Plate	1
22	6904-084	FPR Slide Rod	4
23	9510-300	5/16-18 x 3" Redi-Thread	1
24	9511-600	3/8-16 x 6" Redi-Thread	2
25	9519-150	5/16-24 x 1-1/2" Redi Thread	1
26	9519-187	5/16-14 x 1-7/8" Redi Thread	1

6904-702

**FACEPLATE ROUTER**

**Instructions:**

1. Loosen 1/4-20 x 2.5" SHCS on 53004-007 FPR Clamp
  - Use 3/16 Allen Wrench

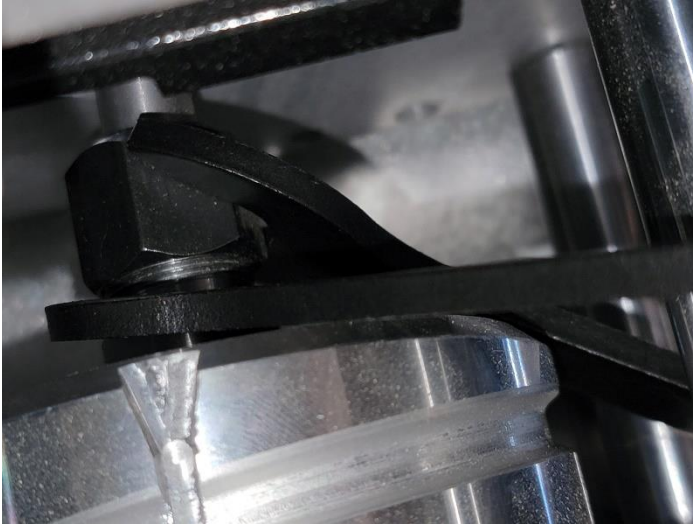


2. Lower router to access collet



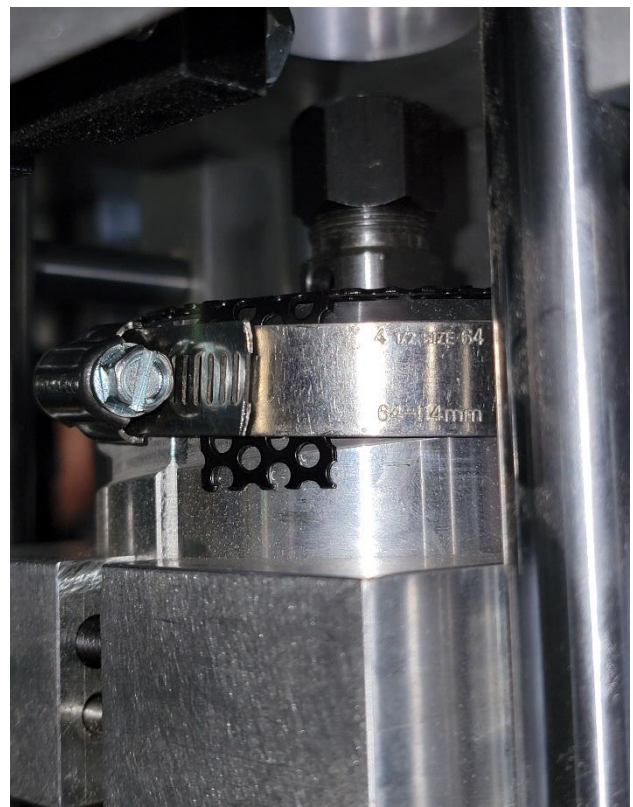


3. Remove cutting bit using collet wrenches

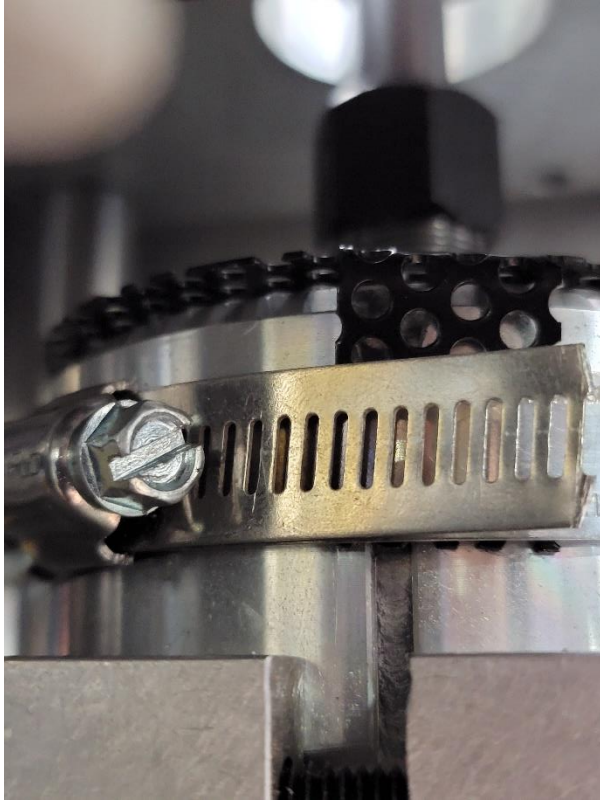


4. Loosely assemble 13-1927 Hose Clamp around the formed legs of the 6905-083 Router Screen

- Place assembly over collet & firmly press Router Screen to the top surface of router



5. Tighten hose clamp around Router Screen using flathead screwdriver



6. Reset router to proper height & tighten router clamp
  - See 17-630 Operation Manual, Section 4-16