

### 1. INSTALLATION

### OPERATIONAL INSTRUCTIONS

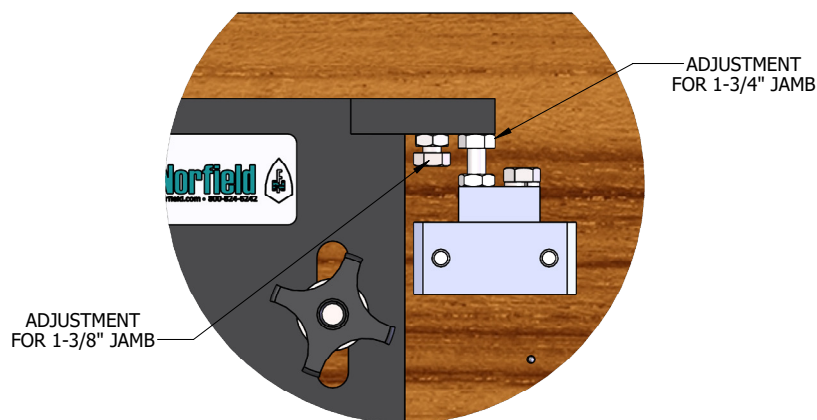
- A. Bolt the unit to a table or base using the holes provided  
The base needs to be heavy or secured so that it does not move as a result of pushing material through the unit.
- B. Check to be certain the router bit nut is tight
- C. Check to be certain the router bit is in general adjustment
- D. Make a test cut  
Using a piece of scrap jamb material, adjust the router bit position for the desired cut.



The Weatherizer is a dedicated door shop tool for preparing exterior door jambs for installation of weatherstripping.

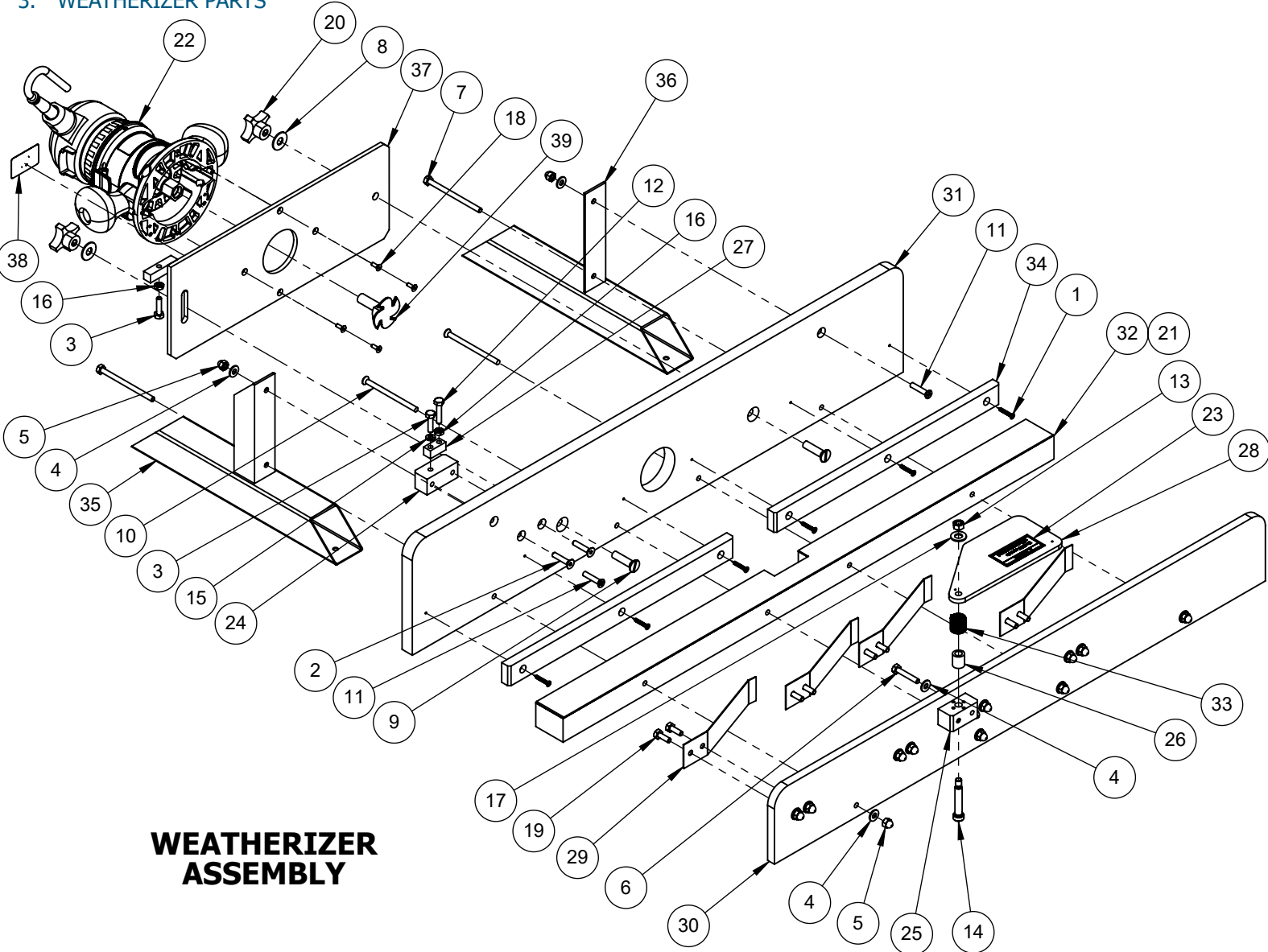
### 2. ADJUSTMENT AND OPERATION

- A. Quick-change adjustment for 1-3/8" to 1-3/4" door jambs
  - Loosen the knob on the right side.
  - Lift the router.
  - Swing the 1-3/4" stop bolt into position.
  - Lower the router onto the stop bolt.
  - Re-tighten the knob.
  - Adjustable stop bolts are provided for both 1-3/8" and 1-3/4" door jambs.
- B. Router bit adjustment
  - Router bit depth should be adjusted so the router bit just clears the jamb reveal face.
- C. Jamb Processing
  - The jamb is processed by placing the reveal down and toward the white plastic surface.
  - As the jamb is pushed through the unit, the spring bars will hold the jamb tight against the vertical white fence.
  - The operator should keep pressure down on the jamb as it is pushed through the unit.
  - Care should be taken not to exert side thrust that would overcome the spring force.



### ADJUSTMENTS

### 3. WEATHERIZER PARTS

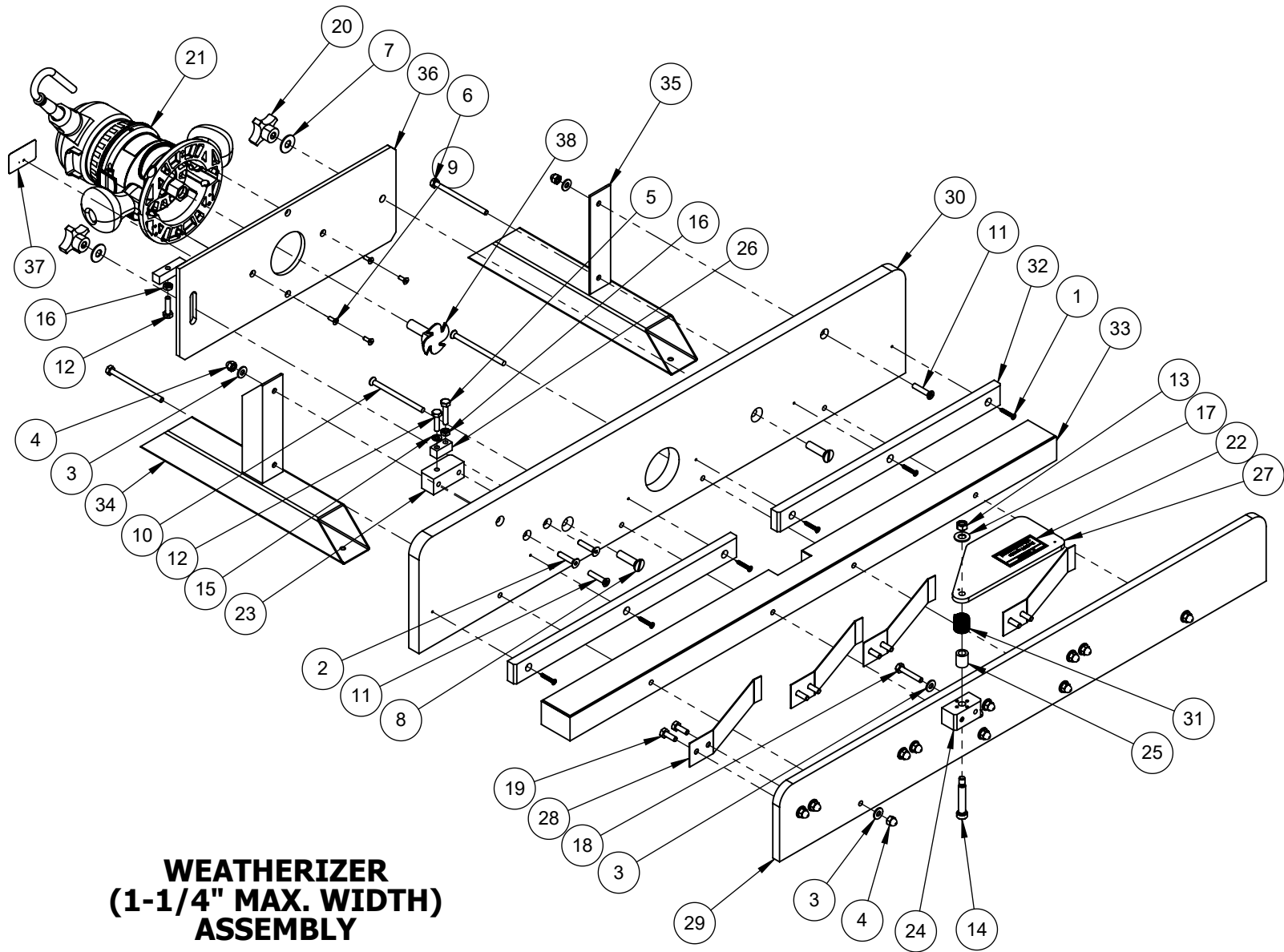


## WEATHERIZER ASSEMBLY

ITEM	PART NUMBER	DESCRIPTION	QTY.
1	*****	#8 x 1" FH Wood Screw	6
2	*****	1/4-20 x 1-1/4" FHCS	2
3	*****	1/4-20 x 1" Hex Bolt	2
4	*****	1/4" Flat Washer	16
5	*****	1/4-20 Acron Nut	14
6	*****	1/4-20 x 1-1/2 Hex Bolt	2
7	*****	1/4-20 x 3-3/4" HHCS	2
8	*****	3/8" Regular FW	2
9	*****	3/8-16 x 1-1/2" FHMS, Slotted	2
10	*****	1/4-20 x 3-3/4" FHMS, Phillips	2
11	*****	1/4-20 x 1-1/4" FH Mach. Screw	2
12	*****	1/4-20 x 1-1/4" HHCS	1
13	*****	5/16"-18 Hex Nut	1
14	*****	5/8 X 1-3/4" SHS	1
15	*****	1/4" Spring Lock Washer	1
16	*****	1/4-20 Hex Jam Nut	2
17	*****	3/8" Flat Washer	1
18	*****	8-32 x 1/2" FHCS	4
19	*****	1/4-20 x 3/4" Hex Bolt	8
20	12-518	Reid DK 57 Knob	2

ITEM	PART NUMBER	DESCRIPTION	QTY.
21	13-527	Wearstrip	1
22	15-396	Dewalt DW618, Complete	1
23	19-021	Label, Warning Guard Removed	1
24	7750-001	Block	1
25	7750-002	Guard Mount	1
26	7750-003	Torsion Spring Spacer	1
27	7750-004	Stop	1
28	7750-006	Poly Guard	1
29	7750-007	Spring	4
30	7750-008	Front Side	1
31	7750-009	Back Plate	1
32	7750-010	Base	1
33	7750-011	Modified Spring	1
34	7750-013	Fence	2
35	7750-101	Stand	1
36	7750-102	Stand	1
37	7750-105	Plate Weldment	1
38	8305-001	Label, Norfield Logo	1
39	SAF254	Weatherizer Router Bit	1

#### 4. WEATHERIZER PARTS



### WEATHERIZER (1-1/4" MAX. WIDTH) ASSEMBLY

ITEM	PART NUMBER	DESCRIPTION	QTY.
1	*****	#8 x 1" FH Wood Screw	6
2	*****	1/4-20 x 1-1/4" FHCS	2
3	*****	1/4" Flat Washer	16
4	*****	1/4-20 Acron Nut	14
5	*****	1/4-20 x 1-1/4" HHCS	1
6	*****	1/4-20 x 3-3/4" HHCS	2
7	*****	3/8" Regular FW	2
8	*****	3/8-16 x 1-1/2" FHMS, Slotted	2
9	*****	8-32 x 1/2" FHCS	4
10	*****	1/4-20 x 3-3/4" FHMS, Phillips	2
11	*****	1/4-20 x 1-1/4" FH Mach. Screw	2
12	*****	1/4-20 x 1" Hex Bolt	2
13	*****	5/16"-18 Hex Nut	1
14	*****	5/8 X 1-3/4" SHS	1
15	*****	1/4" Spring Lock Washer	1
16	*****	1/4-20 Hex Jam Nut	2
17	*****	3/8" Flat Washer	1
18	*****	1/4-20 x 1-1/2 Hex Bolt	2
19	*****	1/4-20 x 3/4" Hex Bolt	8

ITEM	PART NUMBER	DESCRIPTION	QTY.
20	12-518	Reid DK 57 Knob	2
21	15-396	Dewalt DW618, Complete	1
22	19-021	Label, Warning Guard Removed	1
23	7750-001	Block	1
24	7750-002	Guard Mount	1
25	7750-003	Torsion Spring Spacer	1
26	7750-004	Stop	1
27	7750-006	Poly Guard	1
28	7750-007	Spring	4
29	7750-008	Front Side	1
30	7750-009	Back Plate	1
31	7750-011	Modified Spring	1
32	7750-013	Fence	2
33	7750-014	Base	1
34	7750-101	Stand	1
35	7750-102	Stand	1
36	7750-105	Plate Weldment	1
37	8305-001	Label, Norfield Logo	1
38	SAF254	Weatherizer Router Bit	1

## AS A REMINDER

## IMPORTANT SAFETY INSTRUCTIONS

**WARNING:** When using electric tools, basic precautions should be followed to reduce the risk of fire, electric shock and personal injury.

**READ & FOLLOW ALL INSTRUCTIONS** This tool was designed for specific applications. Norfield Industries strongly recommends that this tool NOT be modified and/or used for applications other than those for which it was designed.

If you have any questions about additional applications or uses, DO NOT attempt those uses or modifications until you have been advised by a qualified Norfield Representative. Any and all modifications to or misuses of the tool will void all warranties.

### A: Avoid dangerous environments

- Do not expose equipment to rain or use in damp conditions.
- Do not use tool in presence of flammable liquids or gases.

### B: Dress properly

- Do not wear loose clothing or jewelry. Loose clothing, drawstrings and jewelry can be caught in moving parts. Wear protective hair covering to contain long hair.

### C: ALWAYS use safety glasses

### D: Maintain machine tools properly

- Keep cutters sharp and clean for better and safer performance.
- Always use correct-size cutters.
- Inspect all electrical cords periodically and replace if damaged.

### E: Disconnect electrical supply cord

- Always disconnect cord before servicing, cleaning, changing cutters or adding accessories.

### F: Stay alert

- Watch what you are doing. Use common sense. Do not operate equipment when you are tired or under the influence of medication, alcohol or drugs.

SAVE THESE INSTRUCTIONS